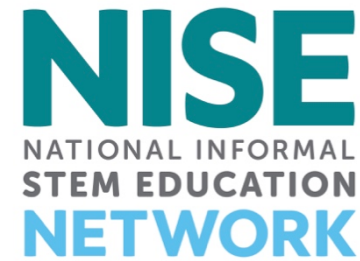


NISE Net Online Workshop

Tips for Planning Your August 21st 2017

Solar Eclipse Event

Friday, January 27, 2017



Welcome!

Today's presenters are:

Brad Herring, *Museum of Life and Science*

Ali Jackson, *Sciencenter*

Dennis Schatz, *Pacific Science Center*

Andrew Fraknoi, *Foothill College*



As we wait to get started with today's discussion, please:

Introduce yourself! Type your name, institution, and location into the Chat Box

Questions? Feel free to type your questions into the Chat Box at any time throughout the webinar or use the raise your hand function in the participants list and we'll unmute your microphone.

Today's discussion will be recorded and shared on nisenet.org at:

nisenet.org/events/online-workshop

Online Workshop Overview



NISE Network Overview

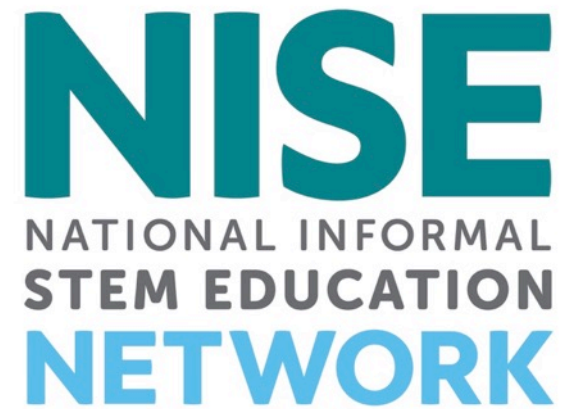
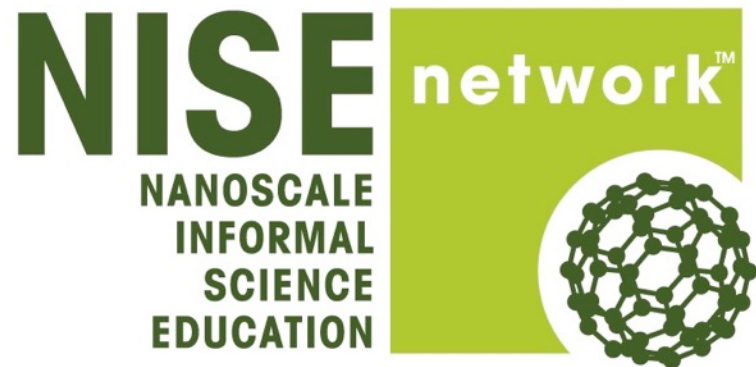
Explore Science: Earth &
Space Toolkit

Solar Eclipse Science 101

Safety & Safe Viewing

Educational Programming

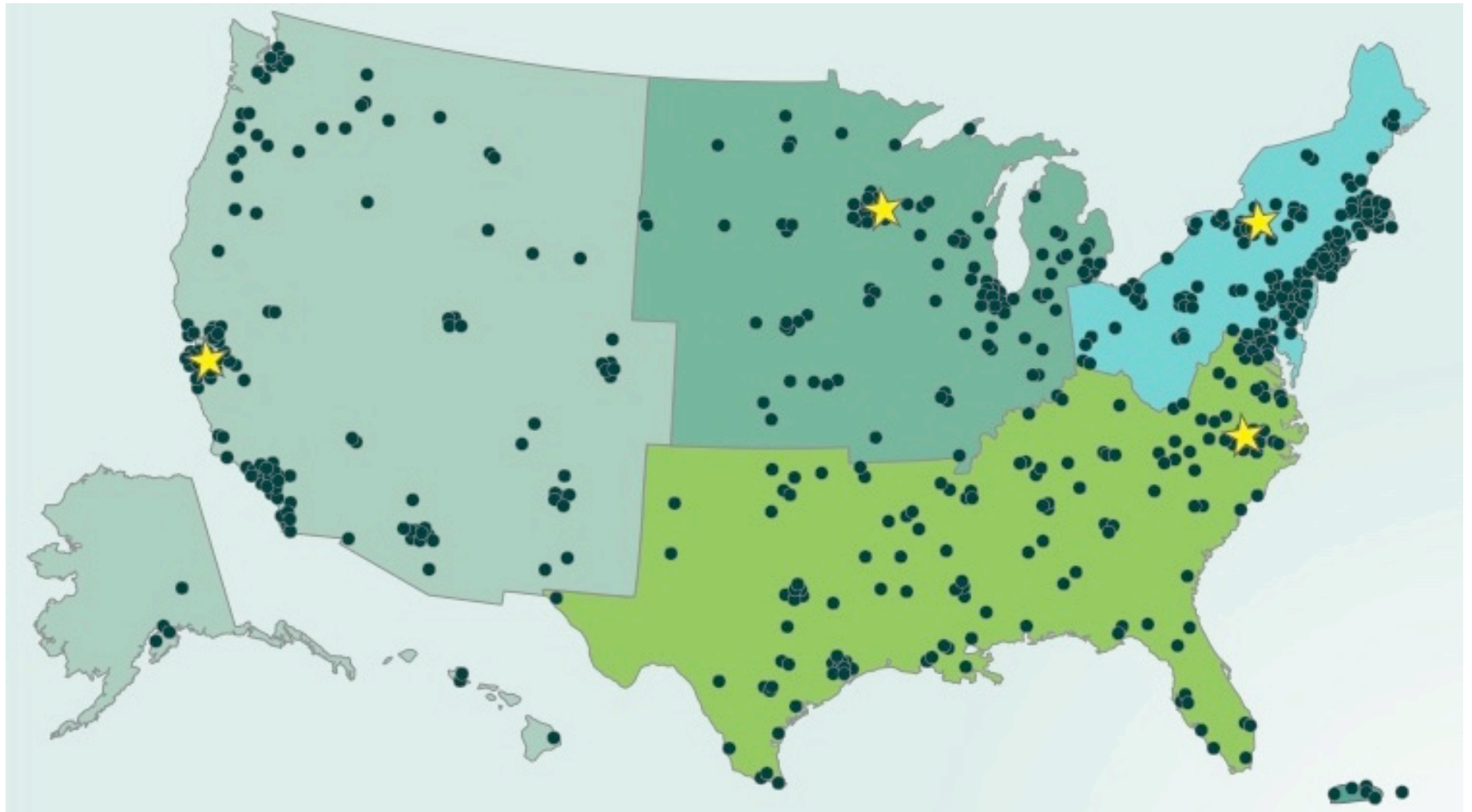
Q/A



*NISE Net supports **informal learning about STEM** in communities across the United States.*



Over **600 organizations** regularly participate in Network activities.



Stay Connected

NORTHEAST – Ali Jackson - Sciencenter, Ithaca, NY

Northeast: NY, VT, NH, ME, RI, CT, and MA

Mid-Atlantic: PA, NJ, MD, DC, DE, OH, and WV

SOUTHEAST – Brad Herring - Museum of Life and Science, Durham, NC

Southeast: VA, NC, SC, KY, TN, LA, MS, AL, GA, FL, and Puerto Rico

South: TX, AR, and OK

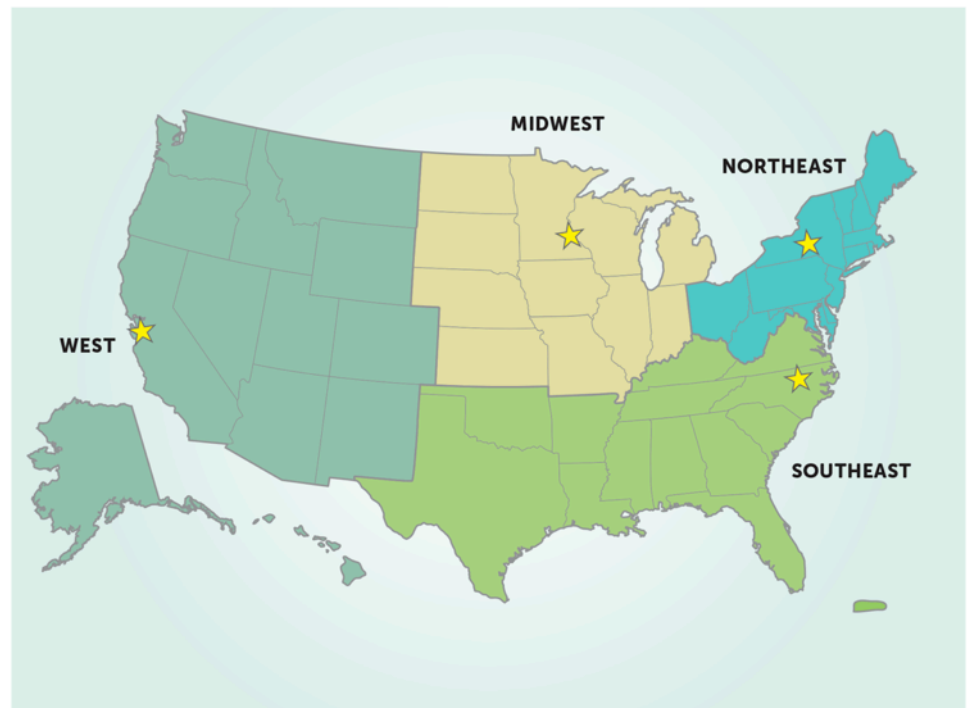
MIDWEST – Christina Leavell - Science Museum of Minnesota, St. Paul, MN

ND, SD, NE, KS, MN, IA, MO, WI, IL, MI, and IN

WEST – Frank Kusiak - UC Berkeley Lawrence Hall of Science, Berkeley, CA

Southwest: CA, NV, AZ, and HI

West AK, WA, OR, ID, MT, WY, CO, UT, and NM



Explore Science: Earth & Space



Event Planning and Promotional Guide



Solar Eclipse



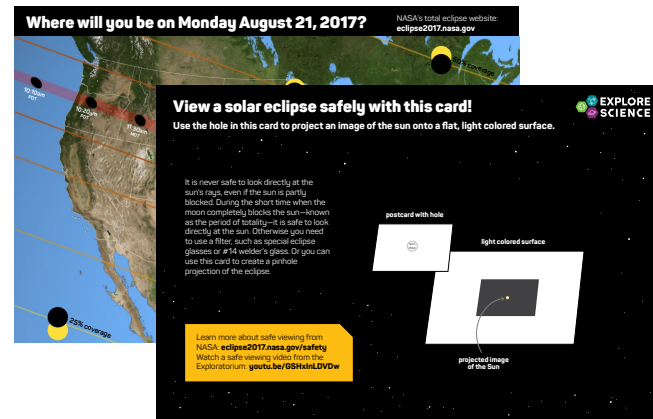
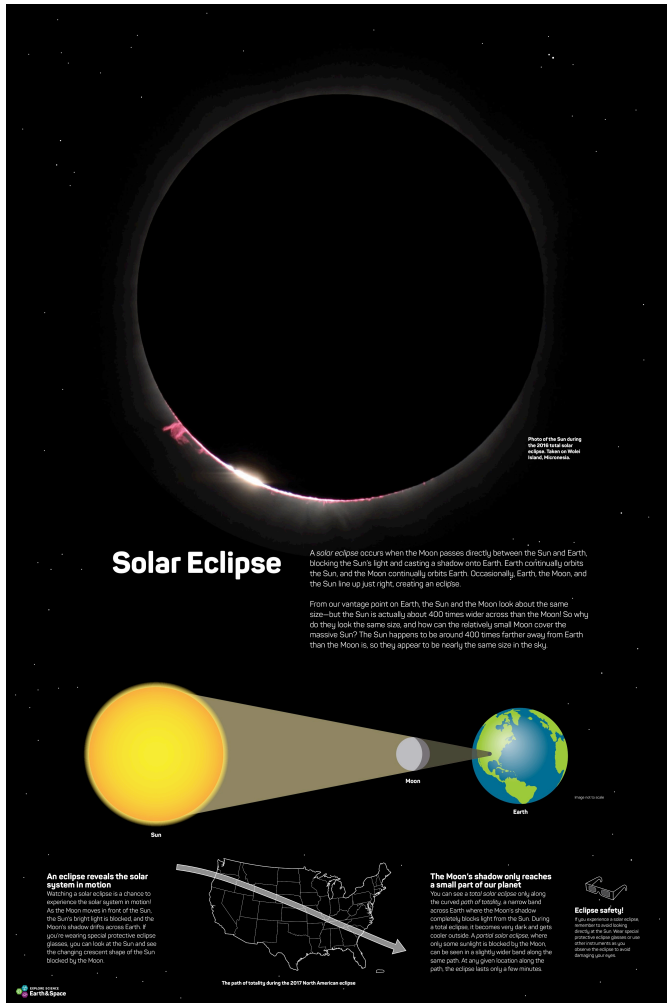
Big Sun, Small Moon



Bear's Shadow



Other Materials



Poll Questions

1. Are you planning on hosting a special event on August 21, 2017 for the solar eclipse? (yes or no)
2. Are you planning any educational activities or events about the solar eclipse in advance of August 21st? (yes or no)

Thank You + Questions

